









## EASEL WHITEBOARD



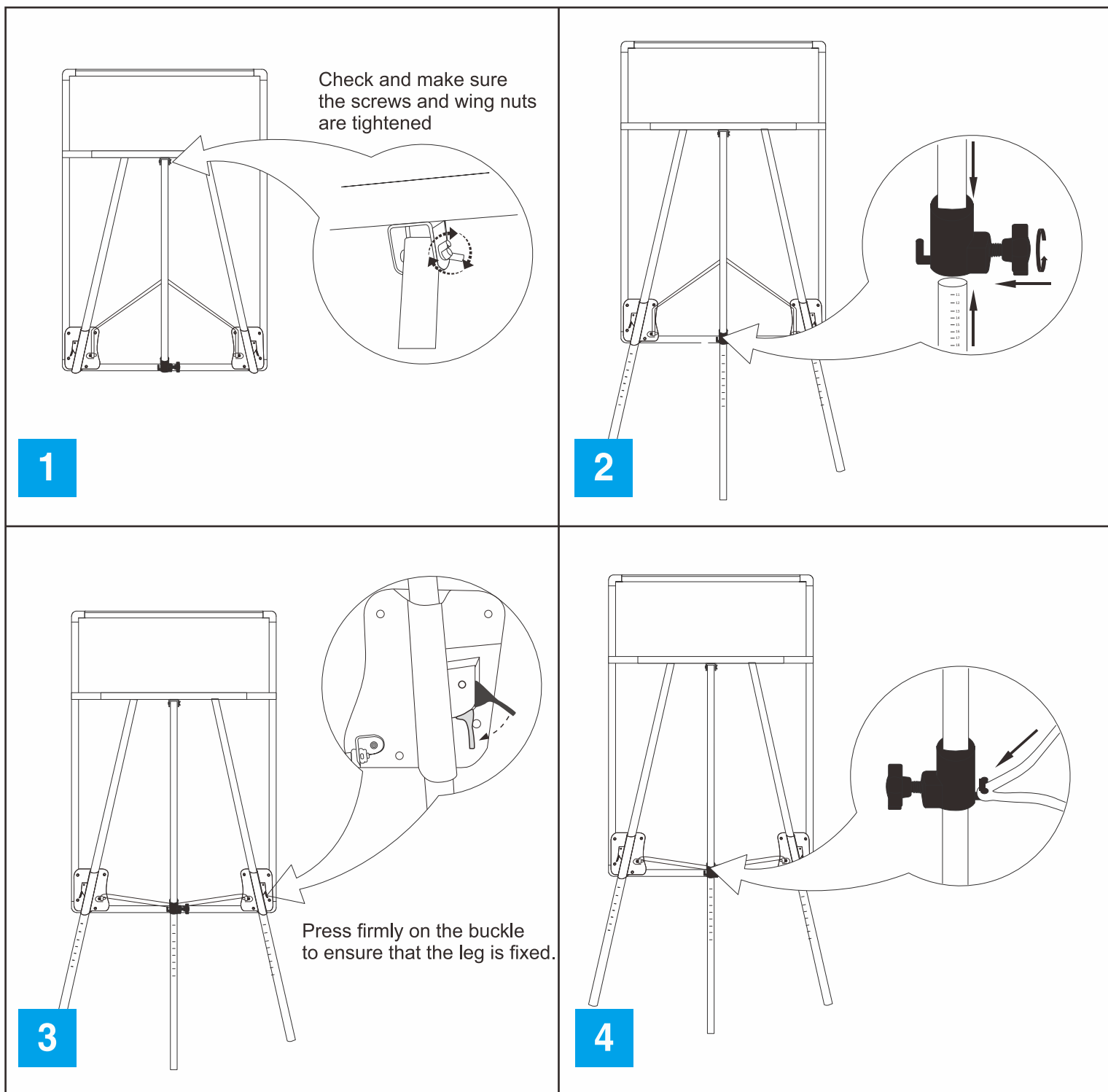
	Description		
①		Whiteboard	1
②		Upper Leg	1
③		Screw	1
④		Wing Nut	1
⑤		Buckle	2
⑥		Setting knob	1
⑦		leg with scale	3
⑧		Extra parts package	1

### WARRANTY

For any product issue (including missing parts, etc.) please contact us at [support@maxtekglobal.com](mailto:support@maxtekglobal.com). Our customer service is always ready to assist!

### NOTE:

A serial number of ①~⑥ parts are pre-installed on the whiteboard, just install three legs with scale(part 7).



### TIPS FOR USING THE WHITEBOARD

1. Each whiteboard is covered with a plastic protective film that aims to protect the surface of the product. Please make sure that you have peeled it off before using.
2. For the pens, it is recommended to use a water-based pen for all our whiteboards because of the special material of board (Please don't use oil-based pens).
3. For the board surface, if the board looks dirty, please wipe it with a damp cloth or wet tissue, or you can use the whiteboard cleaner/lightly-dampened alcohol, so the board can be used just as new after drying.
4. Before using, check the board surface if it's clean, no dirt, no water stains or no alcohol residue on it.