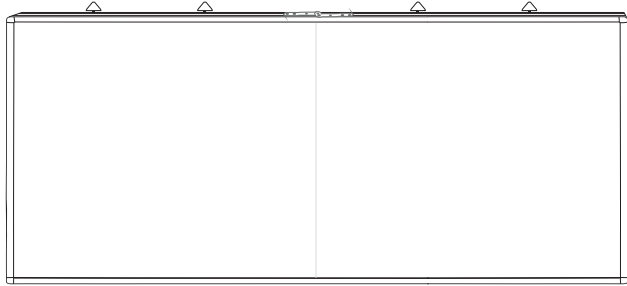


Whiteboard Wall-Mounted Instruction

Components



2xDry-Erase Board

BEFORE ASSEMBLY

When you unpack and prepare for assembly, please place the contents on a carpeted or padded area to protect them from damage.

BOX CONTENTS

White Board & Fixing Parts


Fixing Parts:

A  4x35mm wall screw

B  5x6mm wall screw

 1x marker tray

C  6x30mm anchors

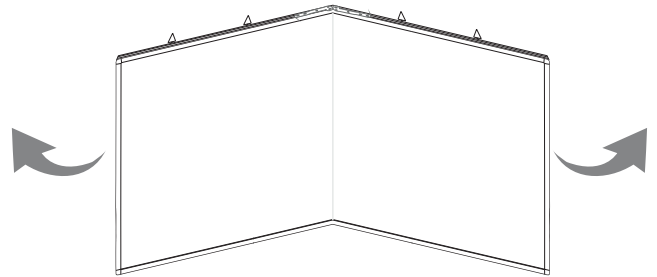
D  4.2x16mm wall screw

E  1x screwdriver

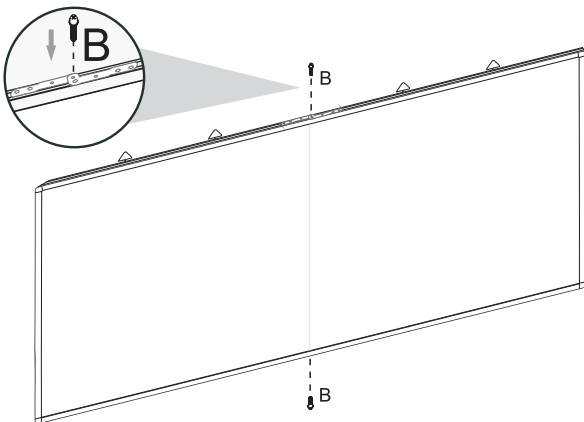
Tools for Required (not included)



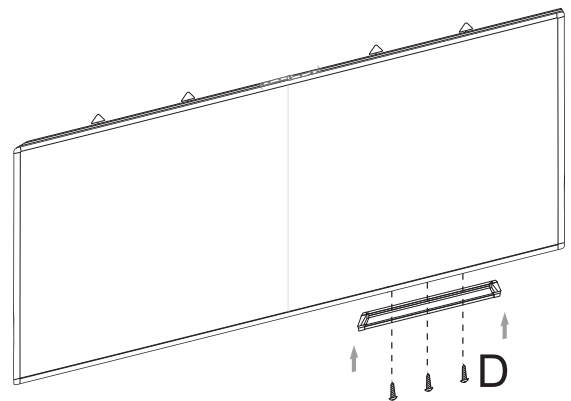
power drill (for pilot holes only)



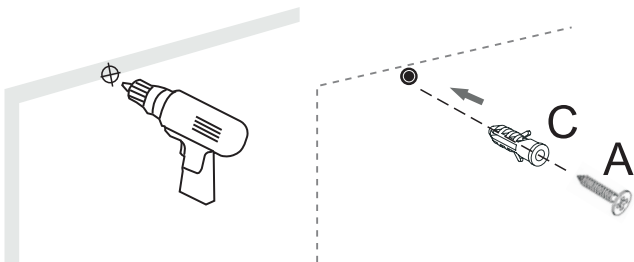
Step 1: Open the whiteboard and keep 2 boards at 180°horizontal. Then screw Part B into the middle joint. (Auxiliary Tool: Part E)



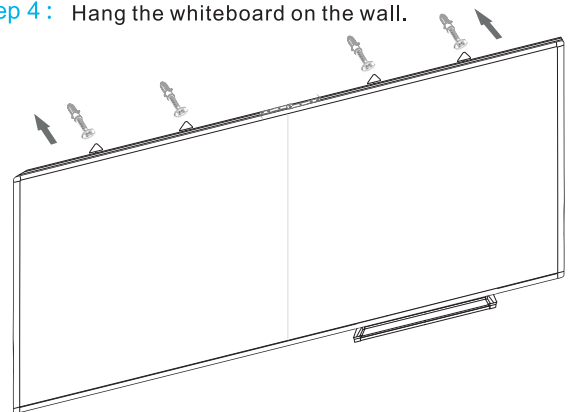
Step 2: Use Part D install marker tray on the right side of the whiteboard.



Step 3: Drill 4 holes in the wall (the diameter of the hole should not exceed 6mm, the drilling distance based on the actual distance of hooks) and insert Part C into the wall tightly. Then screw Part A (leave 3mm length outside the wall) into Part C.



Step 4: Hang the whiteboard on the wall.



TIPS FOR USING THE WHITEBOARD

1. Please peel off the protective film from the writing surface before use. For your convenience, we've already cut a long the board frame. You just need to use your thumb or a knife to tear the film a little bit from the board corner and then take off the film step by step.
2. Please use good quality whiteboard markers(water-based). Oil-based markers and permanent markers are forbidden.
3. Clean surface with a dry or damp soft cloth. Do not use abrasive cleaners. Whiteboard cleaner would be more helpful to wipe off.